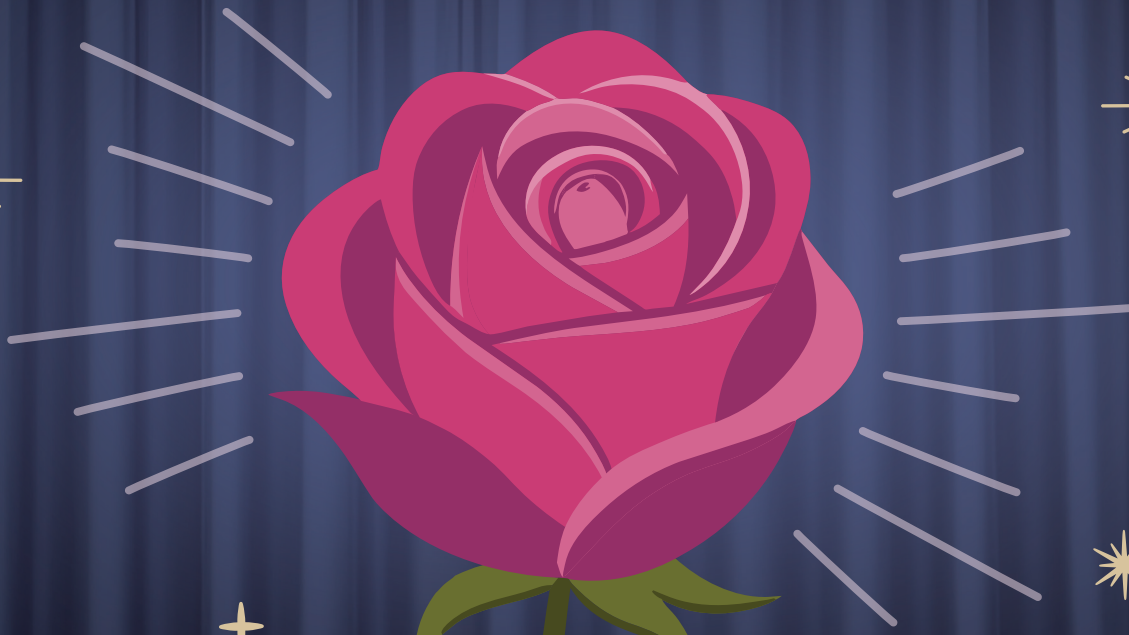


THE MAGIC OF ROSES

OFFICIAL **2025 ATLANTA ROSE SHOW** PROGRAM



HOSTED BY

Greater Atlanta
Rose Society



Greater Atlanta Rose Society

EST. 1957

About the Rose Society

The Greater Atlanta Rose Society is a nonprofit 501(c)(3) organization affiliated with the American Rose Society. Founded in 1957, we are the oldest plant society in the greater metropolitan Atlanta area. Our members are both veteran and novice rosarians whose interests span a wide range of cultural practices. From collecting cuttings and rooting old garden varieties to exhibiting in rose shows, our members are eager to share their knowledge and experience.

Questions? Contact us at hello@atlantarose.org.

Follow Us

Website: atlantarose.org

Instagram and Facebook: @GreaterAtlantaRoseSociety

Support Us

It is our mission to help the community learn more about the cultivation and care of roses. Consulting and master rosarians in our membership volunteer their expertise to help educate and guide anyone in metropolitan Atlanta who has an interest in growing roses.

With your support, we can help the community's rose gardens thrive.



**Scan with your phone's camera to
make a donation.**

Your donation will be used to assist the Greater Atlanta Rose Society's community efforts and future rose shows.

JOIN US FOR THE WONDERS OF THE IMPOSSIBLE

2025 ATLANTA ROSE SHOW



MOTHER'S DAY WEEKEND



ATLANTA BOTANICAL GARDEN

ENTER * THE ROSE * SHOW

BRING YOUR MAGIC & ALL OF YOUR TRICKS

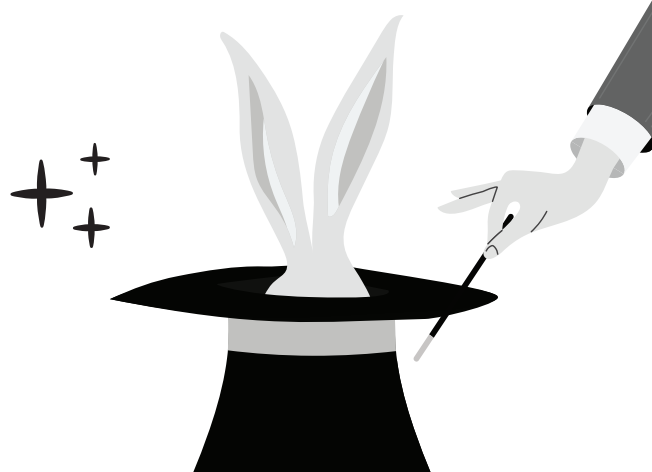
Attention rose lovers! You are invited to enter the 2025 Atlanta Rose Show. Please use this show program for guidance on how to enter 3 divisions: Horticulture, Arrangements, and Photography. The theme this year is "The Magic of Roses," and there are many categories upon which novice and experienced gardeners alike can cast their spell.



DARING
FEATS OF
HORTICULTURE

THE MIND
BENDING
ARRANGEMENTS

PHOTOGRAPHY
THAT DEFIES
EXPLANATION



This year we've got the prizes so you can claim the bragging rights. Read up on what it takes to win certificates, a spot on The Royal Court, and the highly coveted award – BEST IN SHOW!

THE MAGIC OF ROSES

DIVISION 1

HORTICULTURE

General Rules and Information

1. The Greater Atlanta Rose Society Rose Show will take place at the Atlanta Botanical Garden, 1345 Piedmont Avenue, Atlanta, Georgia, on Saturday, May 10, and Sunday, May 11, 2025. All entries must be made between 6:30 a.m. and 9:30 a.m., Saturday, May 11. Judging will begin at 10:00 a.m. Entries may not be removed before 5:00 p.m., Sunday, May 11.
2. This show will be governed by the standard rules, regulations, and guidelines of the American Rose Society (ARS). Roses are to be exhibited by the recognized ARS exhibition name (AEN). Classification and eligibility will be determined in accordance with Modern Roses XII, the 2025 edition of the Handbook for Selecting Roses, and Modern Roses on-line. In cases where a variety is not listed in any of the above official ARS publications, the 2025 edition of the Combined Rose List (CRL) or HelpMeFind.com may be used as a reference (Note: a rose name with double quotation marks is not eligible to be shown except in Class 41, EarthKind Roses). In cases where a variety is not listed in any of the above official ARS publications, the Combined Rose List (CRL) or HelpMeFind.com may be used as a reference. In the event there is a conflict regarding name, class, color, or other pertinent information between the CRL or HelpMeFind.com and the official ARS publications, the latest ARS publication will prevail.
3. Competition is open to all rose growers. All entries must have been grown in a private outdoor garden by the exhibitor and be correctly named and classified. Only one person or team may enter from any one garden. Judges working in the horticulture section of this show are invited to exhibit in Classes 51 and 52.
4. The Show Committee will furnish containers and entry tags, except where specifically indicated otherwise. An entry tag must be made for each specimen except collections shown in one container, which shall have one entry tag with all varieties listed on the tag. Both top and bottom of tag must be completely filled out. Styrofoam wedges are permitted and will be supplied by the Show Committee, or exhibitors may furnish their own.
5. Exhibitors may make **as many entries as desired in each section except for Classes 1 through 10, and as may be noted in other classes, except in classes that are restricted to one entry per exhibitor.**
6. Placement will be made by the Placement Committee except for Classes 1 through 10. In those sections **only**, the exhibitor may place entries while accompanied by a member of the Placement Committee. Once placed, the entry shall not be moved and the exhibitor must promptly exit the show area after placing his/her entry. No one will be permitted in the show area during judging except individuals authorized by the Show Committee.
7. Except where otherwise specifically stated, varieties will be arranged alphabetically within each class according to their ARS exhibition name.
8. Blue, red, yellow, and white ribbons may be awarded to each variety in each class. Only blue-ribbon winners may receive awards. Judges may withhold any award they feel is not merited. The decision of the judges is final.
9. Climbing Hybrid Teas, Grandifloras, Floribundas, Old Garden Roses, Miniatures and Mini-floras must be exhibited in the appropriate section for their bush-type counterparts.
10. The judges will evaluate each specimen in accordance with the following point system:

SCORE CARD	
Form	25
Color	20
Substance	15
Stem and Foliage	20
Balance and Proportion	10
Size	10
	100

11. Specimens will be disqualified for the following reasons:
 - a. A foreign substance that has been applied to enhance the beauty of the entry.
 - b. Misnamed: The name of the rose is neither the variety name given on the entry tag nor an accepted synonym thereof.
 - c. Unlabeled or Mislabeled: Entry lacks an entry tag, OR the exhibitor's name, and/or the name of the variety is not given on the entry tag.
 - d. Exhibitor's name visible, if not corrected before the entry is judged.
 - e. An entry that was not grown outdoors.
 - f. An entry that was not grown by the exhibitor.
 - g. Violation of show rules, specifically:
 1. A challenge class or collection entry that does not satisfy the composition and/or staging requirements of the class in which it is entered.
 2. An entry in a class with restricted eligibility that the exhibitor is not eligible to enter.
12. One-bloom-per-stem Hybrid Teas and Grandifloras must be exhibited without side buds (subject to penalization to the degree of distraction) and at exhibition stage, which is usually one-half to three-fourths open. Multiple-bloom Hybrid Teas, Grandifloras and other types shown as sprays must have two or more blooms in all stages or the same stage of development, according to the variety. "Naturally grown" exhibits need not be disbudded. Stem length and foliage should bear a pleasing relation to size of bloom or spray.
13. Neither the Greater Atlanta Rose Society nor the Atlanta Botanical Garden assumes any responsibility for loss or damage to persons or property in relation to this show.

Awards

Awards and Certificates: Keeper trophies and/or special challenge awards will be awarded to the best blue ribbon entry in each class. ARS certificates will be awarded where appropriate.

Best-in-Show Award: The Best-in-Show winner will be selected from winners of all horticulture classes on the trophy table, **excluding Classes 51 and 52.**

To Claim Awards: Trophies, awards, and ARS certificates may be claimed after 2:00 p.m. on Saturday, May 10. Ribbons may be claimed at the close of the show, 5:00 p.m., Sunday, May 11.

Perpetual Challenge Classes

Only one entry is permitted per exhibitor in classes 1-10.

Class 1 – H.H. Huckeba Perpetual Trophy

Eight (8) or more Hybrid Teas or Grandifloras, one or more varieties, one-bloom-per-stem, no side buds, any stage of bloom, in one container with one entry tag, all varieties listed on tag. ***This class is open only to American Rose Society members who reside in the Deep South District OR members of affiliated societies in the Deep South District. Eligible for GARS certificate.***

Classes 2-10 are open only to current members of The Greater Atlanta Rose Society. Evidence of membership is required.

Class 2 – Bowman Perpetual Trophy

Three (3) one-bloom-per-stem Hybrid Teas or Grandifloras, same variety, showing stages of bloom: one bud, one exhibition stage, one fully open, exhibited in one container with one entry tag. Bloom height should be uniform. *Eligible for GARS certificate.*

Class 3 – Capt. Nathan Levy Perpetual Trophy

Five (5) one-bloom-per-stem Hybrid Teas or Grandifloras, same or different varieties, at exhibition stage, in one container, with one entry tag with all varieties listed on tag. *Eligible for GARS certificate.*

Class 4 – Marvous & Kitsy Mostellar Perpetual Trophy

Six (6) or more specimens, one or more varieties, of Old Garden Roses or Species roses, pleasingly arranged in one suitable container to be furnished by the exhibitor. Varieties must be correctly named on one entry tag. Oasis may be used. *Eligible for GARS certificate.*

Class 5 – Hastings Bowl

Three (3) Hybrid Teas or Grandifloras, same or different varieties, one-bloom-per-stem, no side buds, at exhibition stage, in separate containers with separate entry tags. *Eligible for GARS certificate.*

Class 6 – Bill Baker Memorial Trophy

Three (3) specimens, all different varieties, that have been All- America Rose Selections, American Garden Rose Selections, or American Rose Society Members Choice winners, at exhibition or fully open stage, in separate containers and separately tagged. *Eligible for GARS certificate. A list of eligible roses may be found at the end of this schedule.*

Class 7 – Dorothy Huie Memorial Trophy

Five (5) Floribundas, same or different varieties, one-bloom-per-stem or sprays, in one container, with one entry tag, with all varieties listed on tag. *Eligible for GARS certificate.*

Class 8 – Billie Marsh Perpetual Trophy

Three (3) one-bloom-per-stem Miniature or Miniflora roses that have been American Rose Society Award of Excellence winners, ARS Miniature/Miniflora Hall of Fame, or ARS Members Choice winners, at exhibition or fully open stage, one-bloom-per-stem or spray, in separate containers and separately tagged. *Eligible for GARS certificate. A list of eligible roses may be found at the end of this schedule.*

Class 9 – Maibell Dickey Hodgins Perpetual Trophy

A collection of three (3) fully open Hybrid Tea or Grandiflora rose specimens (any combination of one-bloom-per-stem or spray), one or more varieties to be shown in one container with varieties

correctly named on tag. *Eligible for GARS certificate.*

Class 10 – Robert H. Snyder Perpetual Trophy

Six (6) or more specimens, one or more varieties of Shrub roses, pleasingly arranged in one suitable container to be furnished by the exhibitor. Varieties must be correctly named on tag. Oasis may be used. *Eligible for GARS certificate.*

Exhibitors may make as many entries of the same or different varieties in each of the following classes, unless noted otherwise.

Standard Horticulture

Exhibitors may enter ***as many as three (3) entries as desired of the same varieties, except in classes that are restricted to one entry per exhibitor.***

Special note: According to new 2025 guidelines, Judges who are judging a show may enter any class in the show schedule, as well as the Judges' classes.

Class 11 – One-Bloom-Per-Stem Hybrid Teas

One (1) Hybrid Tea, one bloom per stem, at exhibition stage. Entries will be exhibited disbudded and staged alphabetically according to variety name. Entries in this class are eligible for the following show awards:

Queen of the Show

King of the Show

Princess of the Show

Class 12 – One-Bloom-Per-Stem Grandifloras

One (1) Grandiflora, one bloom per stem, at exhibition stage. Entries will be exhibited disbudded and staged alphabetically according to variety

name. Entries in this class are eligible for the following show awards:

Queen of the Show

King of the Show

Princess of the Show

Class 13 – Fully-Open Bloom Hybrid Teas

One (1) one-bloom-per-stem specimen without side buds. Bloom to be fully open, stamens fresh and easily visible. Petaloids may be removed. *Eligible for ARS Hybrid Tea Open Bloom certificate.*

Class 14 – Fully-Open Bloom Grandifloras

One (1) one-bloom-per-stem specimen without side buds. Bloom to be fully open, stamens fresh and easily visible. Petaloids may be removed. *Eligible for GARS certificate.*

Class 15 – Hybrid Tea Spray

One (1) Hybrid Tea spray spray, two or more blooms. *Eligible for ARS Hybrid Tea Spray certificate.*

Class 16 – Grandiflora Spray

One (1) Grandiflora spray, two or more blooms. *Eligible for ARS Grandiflora Spray certificate.*

Class 17 – Single-Type Large Rose

One (1) specimen, single-type large rose, four to eight petals or classed as “single” in Modern Roses 12 or in Modern Roses on-line. *Eligible for ARS Large Rose Single Bloom certificate.*

Class 18 – Floribunda Sprays

One Floribunda spray, two or more blooms.

Entries in this class are eligible for the following show awards:

Floribunda Spray Queen

Floribunda Spray King

Floribunda Spray Princess

Class 19 – One-Bloom-Per-Stem Floribundas

One (1) one-bloom-per-stem specimen without side buds. Each entry will be judged for the most perfect phase of beauty, which may vary from one-half to fully open. *Eligible for ARS Best Floribunda One-Bloom-Per-Stem certificate.*

Class 20 – Polyantha Spray

One Polyantha spray, two or more blooms. *Eligible for ARS Polyantha Spray certificate.*

Class 21 – Climbers

One (1) specimen exhibited naturally grown or disbudded. Only roses classified by ARS as Large-Flowered Climber [LCI], Hybrid Wichurana [HWich], Hybrid Gigantea [HG], or Rambler [R] are eligible to be entered in this section. *Eligible for ARS Best Climber certificate.*

Class 22 – Classic Shrub

One (1) specimen of a Classic Shrub rose. Side growth may remain or may be removed, subject to penalization if distracting. Each variety is to be judged on its own merits. Only roses classified by ARS as belonging to the Hybrid Musk [HMSk], Hybrid Kordesii [HKor], Hybrid Moyesii [HMoy], or Hybrid Rugosa [HRg] classes are eligible to be shown in this section. *Eligible for ARS Best Classic Shrub Certificate.*

Class 23 – Modern Shrubs

One (1) specimen of a Modern Shrub rose. Side growth may remain or may be removed, subject to penalization if distracting. Each variety is to be judged on its own merits. Only roses classified by ARS as English-Style shrubs (Eng), Ground Covers (Go), and Landscape Shrubs (S) are eligible to be entered in this section.

Modern Shrub Queen

Modern Shrub King

Modern Shrub Princess

Old Garden Roses

Exhibitors need not include dates of introduction on the entry tags.

After the judges have selected the best from each of classes 24-29, those winning entries will be set aside for further judging to determine which roses will be awarded the Dowager Queen and Victorian Rose Certificates. The best blue-ribbon entries for each of Classes 24-29 that was introduced prior to 1867 will be judged to determine the winner of the ARS Dowager Queen Certificate. The best blue-ribbon entries for these classes that was introduced in 1867 or later (or which is listed without a date of introduction in the latest ARS publication) will be judged to determine the winner of the ARS Victorian Rose Certificate.

Class 24 – Alba, Centifolia, Damask, Gallica, or Moss

One (1) specimen of an Old Garden Rose classified as an Alba [A], Centifolia [C], Damask [D], Gallica [Gal], or Moss [M]. Side growth may remain or may be removed, subject to penalization if distracting. Each variety is to be judged on its own merits. *Eligible for GARS certificate.*

Class 25 – China or Hybrid China

One (1) specimen of an Old Garden Rose classified as a China [Ch] or a Hybrid China [HCh]. Side growth may remain or may be removed, subject to penalization if distracting. Each variety is to be judged on its own merits. *Eligible for GARS certificate.*

Class 27 – Bourbon or Portland

One (1) specimen of an Old Garden Rose classified as a Bourbon [B] or Portland [P]. Side growth may remain or may be removed, subject to penalization if distracting. Each variety is to be judged on its own merits. *Eligible for GARS certificate.*

Class 28 – Hybrid Perpetual

One (1) specimen of an Old Garden Rose classified as a Hybrid Perpetual [HP]. Side growth may remain or may be removed, subject to penalization if distracting. Each variety is to be judged on its own merits. *Eligible for GARS certificate.*

Class 29 – All Other OGRs

One (1) specimen of an Old Garden Rose not listed among the above classes. This includes roses classified as Ayrshire [Ayr], Boursalt [Bslt], Hybrid Bracteata [HBc], Eglanteria [Eg], Hybrid Foetida [Hft], Hybrid Multiflora [HMult], Hybrid Sempervirens [HSem], Hybrid Setigera [HSet], Hybrid Spinosissima [HSpn], and Miscellaneous OGRs [Misc OGR]. Side growth may remain or may be removed, subject to penalization if distracting. Each variety is to be judged on its own merits. *Eligible for GARS certificate.*

Class 30 – Species Roses

One (1) specimen of a Species rose [Sp]. Unwanted side growth may be removed subject to penalization. Each variety is to be judged on its own merits. *Eligible for the ARS Genesis Award.*

Collections

Class 31 – Hybrid Tea or Grandiflora

Three (3) Hybrid Teas or Grandifloras, same or different varieties. Specimens may be all the same or multiple varieties, and may be exhibition form or fully open. Collections are to be exhibited in one container with one entry tag with all varieties listed on tag. *Eligible for GARS certificate.*

Class 32 – Floribunda or Polyantha Sprays

Three (3) Floribunda or Polyantha sprays, same or any combination of varieties. Collections are to be exhibited in one container with one entry tag with all varieties listed on tag. *Eligible for GARS*

certificate.

Class 33 – Climbers

Three (3) specimens of Climbers, same or different varieties, may be sprays or one-bloom-per-stem. Collections are to be exhibited in one container with one entry tag with all varieties listed on tag. *Eligible for GARS certificate.*

Class 34 – Shrubs

Three (3) specimens of Shrub roses, same or different varieties, may be sprays or one-bloom-per-stem. Collections are to be exhibited in one container with one entry tag with all varieties listed on tag. *Eligible for GARS certificate.*

Class 35 – Old Garden and/or Species Roses

Three (3) specimens of Old Garden and/or Species roses, same or different varieties, may be sprays or one-bloom-per-stem. Collections are to be exhibited in one container with one entry tag with all varieties listed on tag. *Eligible for GARS certificate.*

Special Classes

Class 36 – Fragrance

One (1) bloom, any variety of rose otherwise eligible to be exhibited in this show. This class will be judged 70% on fragrance and 30% on horticultural excellence. Exhibitor may make a maximum of three (3) entries of different varieties. *Eligible for ARS Most Fragrant certificate.*

Class 37 – Rose in a Bowl – Large Bloom

One (1) specimen, any variety except Miniature or Miniflora, at the most perfect stage of beauty for that rose, floated in a container furnished by the Show Committee; no foliage permitted. A rose stem may not touch the glass of the bowl. Exhibitor may make multiple entries, provided each is

of a different variety. *Eligible for ARS Best Rose Bowl Large Bloom.*

Class 38 – Shrub Rose Bowl

Three or more specimens, shrub roses at exhibition stage, floated in a container furnished by the Show Committee; no foliage permitted. A rose stem may not touch the glass of the bowl. Each entry will be judged for the most perfect phase of beauty for that variety. *Eligible for GARS certificate.*

Class 39 – Old Rose Bowl

Three or more specimens, Old Garden or Species roses at exhibition stage, floated in a container furnished by the Show Committee; no foliage permitted. A rose stem may not touch the glass of the bowl. Each entry will be judged for the most perfect phase of beauty for that variety. *Eligible for GARS certificate.*

Class 40 – English Box

Six (6) Hybrid Tea or Grandiflora blooms, exhibition stage, one or more varieties, to be exhibited in an English box supplied by the Show Committee. All varieties must be correctly named on one entry tag. *Eligible for ARS Best English Box certificate.*

Class 41 – Rose in A Frame

One (1) large rose specimen (not Miniature or Miniflora) at exhibition stage. Foliage is permitted. Exhibited in a frame supplied by the Show Committee. Each exhibitor is allowed one (1) entry. Subject to the availability of frames, exhibitors may make a second entry of a different variety. *Eligible for GARS certificate.*

Class 42 – New Seedlings and Sports

One (1) stem of an unregistered seedling or sport (large, mini or mini-flora) hybridized or found by the exhibitor. Class and parentage is to be indi-

cated on entry tag, if known. *Eligible for ARS Best Seedling certificate.*

Class 43 – EarthKind Roses

One (1) specimen of any variety of rose on the EarthKind Rose List: Belinda's Dream, Pink Pet, Carefree Beauty, Ducher, Duchesse de Brabant, Else Poulsen, "Georgetown Tea", Knock Out [only the original red], La Marne, Marie Daly, Mlle Cécile Brünner [not the climber], Mme Antoine Mari, Mutabilis, New Dawn, Perle d'Or, Climbing Pinkie, Rêve d'Or, Sea Foam, Souvenir de St. Anne's, "Spice", The Fairy. *Eligible for GARS certificate.*

Class 44 – Classic Rose

One (1) specimen of any large rose, except Old Garden Roses, introduced prior to 1985. Specimen may be a single bloom or a spray, have side-buds, or be disbudded. *Eligible for GARS certificate.*

Special Exhibitors

Blue ribbon exhibition-stage entries in classes 45 - 48 are eligible to compete for Queen of Show for their respective varieties – Hybrid Tea, Grandiflora, Floribunda, Modern Shrub, Old Garden Rose, Miniature, or Miniflora.

Class 45 – Novice

One (1) specimen, any type or variety, entered by an exhibitor who has never won a blue ribbon at an ARS sanctioned rose show. *Eligible for ARS Best Novice certificate.*

Class 46 – "Bridesmaid"

Any individual rose or rose spray entered by an exhibitor who has never won a class (has never had a rose on the head table) at this or any other ARS rose show. *Eligible for GARS certificate.*

Class 47 – Youth

Any individual rose or rose spray entered by an exhibitor who is 17 years of age or younger. Specimen must have been personally grown by the exhibitor. *Eligible for GARS certificate.*

Class 48 – New Members

Any individual rose or rose spray entered by an exhibitor who first joined the Greater Atlanta Rose Society in 2022 or later. *Eligible for GARS certificate.*

Class 49 – Small Gardens

Any individual rose or rose spray entered by an exhibitor whose garden contains fewer than 50 rose bushes. *Eligible for GARS certificate.*

Class 50 – No-Spray Rose Gardens

Any individual rose or rose spray entered by an exhibitor whose roses are grown without sprayed pesticides (fungicides, insecticides, miticides). *Eligible for GARS certificate.*

Judges

Class 51 – Judges Specimen

One (1) specimen, one-bloom-per-stem or multiple-bloom spray, any type or variety including unnamed seedlings or sprays. This class is restricted to ARS judges judging this show. Any number of entries may be made provided each is of a different variety. *Eligible for ARS Best Judges Certificate.*

Class 52 – Judges Collection

A collection of roses, any type or variety including unnamed seedlings or sprays, same or different varieties, may be sprays or one-bloom-per-stem, exhibited in one container with one entry tag with all varieties listed on tag. This class is restricted

to ARS judges judging this show. *Eligible for ARS Best Judges Certificate.*

Miniature and Miniflora

Class 53 - One-Bloom-Per-Stem Miniatures

One (1) Miniature rose, one-bloom-per-stem, at exhibition stage. Entries will be exhibited disbudded and staged alphabetically according to variety name. Entries in this class are eligible for the following show awards:

Miniature Queen of the Show

Miniature King of the Show

Miniature Princess of the Show

Class 54 - One-Bloom-Per-Stem Minifloras

One (1) Miniflora rose, one-bloom-per-stem, at exhibition stage. Entries will be exhibited disbudded and staged alphabetically according to variety name. Entries in this class are eligible for the following show awards:

Miniflora Queen

Miniflora King

Miniflora Princess

Class 55 - Fully-Open Mini/Miniflora

One (1) one-bloom-per-stem Miniature or Miniflora rose exhibited disbudded, fully open. *Eligible for ARS Best Open Bloom Miniature Certificate.*

Class 56 - Single-Type Mini/Miniflora

One (1) Miniature or Miniflora rose, single-type specimen, four to eight petals or classed as “single” in Modern Roses 12 or Modern Roses on-line. *Eligible for ARS Best Single Miniature Certificate.*

Class 57 – Mini/Miniflora Rose Spray

One (1) multiple-bloom Miniature or Mini-Flora rose spray, two or more blooms. *Eligible for ARS*

*Best Miniature Spray Certificate.***Class 58 – Mini/Miniflora Rose in a Bowl**

One (1) Miniature or Miniflora bloom, any stage of bloom, floated in a container furnished by the Show Committee; no foliage permitted. A rose stem may not touch the glass of the bowl. *Eligible for ARS Best Rose Bowl Miniature Bloom Certificate.*

Class 59 – Miniature or Miniflora English Box

Six (6) Miniature blooms or six Miniflora blooms, exhibition stage, one or more varieties. All varieties must be correctly named on one entry tag. Any number of entries may be made provided each is of a different variety or combination of varieties. *Eligible for ARS Best Miniature English Box Certificate.*

Class 60 – Three Miniatures or Minifloras

Three (3) Miniature or Miniflora roses. Specimens may be all the same or multiple varieties, and may be exhibition form or fully open, in one container. All varieties must be correctly named on one entry tag. *Eligible for GARS certificate.*

Class 61 – Three Miniature/Miniflora Sprays

Three (3) Miniature or Miniflora sprays. Specimens may be all the same or multiple varieties, and may be exhibition form or fully open, in separate containers with separate entry tags. *Eligible for GARS certificate.*

Class 62 – Miniature/Miniflora Cycle of Bloom

Cycle of bloom, three (3) Miniature or Miniflora specimens, same variety, displaying three stages of development: one bud, one exhibition stage, one fully open. One container, one entry tag. *Eligible for GARS certificate.*

Class 63 – Miniature/Miniflora Rose in a Frame

One (1) Miniature or Miniflora specimen, at exhibition stage. Exhibited in a frame supplied by the Show Committee. Foliage is permitted. Each exhibitor is allowed one (1) entry. Subject to the availability of frames, exhibitors may make a second entry of a different variety. *Eligible for GARS certificate.*

Best in Show**Class 64 – Best in Show**

The Best-in-Show winner will be selected from winners of all horticulture classes on the trophy table, excluding Classes 51 and 52. *Eligible for ARS Best in Show certificate.*

DIVISION 2

ARRANGEMENTS

Rules for Arrangements Exhibitors

1. This division is open to all amateur arrangers and is governed by the rules and practice for exhibiting rose arrangements as prescribed by the American Rose Society (ARS) **Guidelines for Judging Rose Arrangements**. By entering this show given under ARS rules, exhibitors agree to abide by those rules.
2. All exhibitors **must pre-register** their entries with Sara Coleman **by 9:00 a.m. on Friday, May 9**, at 678-736-0889, or alsara.coleman@gmail.com. PLEASE provide name, telephone number, section, and class for all entries. All reservations will be confirmed.
3. Entries may be placed between 6:00 a.m. and 9:45 a.m. on Saturday, May 10, 2025, and may not be removed before 4:00 p.m. Sunday, May 11. Each exhibitor is responsible for prompt removal of his/her design(s) at the close of the show.
4. ARS arrangement tags will be provided by the Show Committee. Exhibitors will be responsible for completing both sections of the tag to include section, class, title, roses (ARS Approved Exhibition Names), style of design if required, and exhibitor name and address.
5. All roses must be outdoor garden grown and must be of high quality.
6. A rose, or roses must be the dominant floral element in all arrangements.
7. The ARS American Exhibition Name of all roses in each arrangement must be written on the entry tag.
8. "AG" must be written or checked on the entry tag if roses are arranger-grown for the entry to be eligible for an ARS medal certificate or any other award requiring arranger-grown roses.
9. One entry per exhibitor is allowed in each class, but an exhibitor may enter as many classes as desired. More than one exhibitor from the same garden may enter the same class.
10. Accessories are allowed unless stated otherwise in the schedule.
11. Flowers other than roses, and dried and /or treated dried plant material are allowed unless prohibited by the schedule
12. A card of intent may be included with an arrangement as an explanation of the arranger's interpretation of the theme or class title unless the schedule specifically forbids it.
13. An arrangement incorrectly placed in a class will be judged in the class in which it is placed.
14. All entries must be the work of the exhibitor and not exhibited in any previous show.
15. Only the exhibitor may touch or move an arrangement. However, in special circumstances, if all efforts to locate the arranger have failed, the Arrangement Chair may carefully move an arrangement.
16. Infringement of the following rules will result in a **severe penalty**:
 - a. Painted or dyed fresh plant materials and live creatures are not allowed.
 - b. The use of plant materials on the state or local conservation list is not permitted. Some venues will not allow plant species designated as invasive on their premises. In such cases the schedule must state that these are not permitted in arrangements.
 - c. The flag of any country, state or organization may not be used in an arrangement or as a decoration in any way.
 - d. Abstraction of the rose bloom (abstraction by drying for Dried Arrangement or Craft Item Classes excepted).
 - e. Nonconformance with stated requirements of Special Classes.

- f. Use of roses other than miniature or mini-flora in any Miniature arrangement class.'

Severe penalization shall consist of the arrangement being ineligible for a first-place or higher award. An arrangement so penalized can at most be awarded second place.

17. There are two causes for **disqualification** of an arrangement:
 - a. Roses not outdoor grown.
 - b. Use of artificial plant material.
18. Niches, backgrounds, bases, accessories, and cards of intent are allowed and may be provided by the exhibitor. Standard designs may not exceed 28" in width and 28" in depth unless otherwise stated. There are no height restrictions. Miniature arrangements may not exceed 12" in width, depth or height. Miniature designs will be staged at eye level. Tables will be covered in cream tablecloths.
19. Fresh plant material may be used in all designs unless otherwise noted. Dried and treated dried plant material may be used in all designs except those calling for all fresh plant material. **Artificial plant material, painted or dyed fresh plant material, and live creatures are not allowed.** The use of plant material on the state conservation list is not permitted.
20. All reasonable care will be taken to safeguard exhibits but neither the Greater Atlanta Rose Society nor the Atlanta Botanical Garden assumes responsibility for loss or damage.
21. Judging will be in accordance with ARS rules and regulations and Guidelines for Judging Rose Arrangements, revised 2024. Decisions of the judges will be final.

SCORE CARD	
Conformance	15
<ul style="list-style-type: none"> Roses correctly named Conformance to type of design Other specific requirements of schedule 	
Design	30
<ul style="list-style-type: none"> Balance, Dominance, Contrast Rhythm, Proportion, Scale 	
Perfection of rose(s)	30
<ul style="list-style-type: none"> Including condition of other plant material 	
Creativity & expressiveness	15
Distinction	10
<hr/>	
100	

Arrangement Awards

The highest scoring arrangement in the Arrangement Division will receive the **George A. Harbour, Jr. Award**. This award was established in 1991 by friends in The Greater Atlanta Rose Society to honor George A. Harbour, Jr., a long-time valued member of the society and a past president and rose show chairman. Mr. Harbor was a Life Accredited Horticulture and a Rose Arrangements judge.

The highest scoring blue-ribbon Traditional arrangement in the Arrangement Division will receive the **Mary Coleman Perpetual Trophy**. This award was established in 2004 to honor Mary Coleman, a very talented Arrangement and Horticulture judge. Mary was an inspiration to many

arrangers and we honor her with this award.

First place designs must score 90 points or more, second place designs must score 85 points or more and third place designs must score 80 points or more. A design must receive a first place ribbon to receive a keeper award. Only one first, second, and third place ribbon may be awarded in each class. **A design must place first and must score at least 92 points to be eligible for ARS higher awards (Rosettes and Certificates).**

ARS Medal and Miniature Medal Certificates may be awarded to first place winners. In order of merit, Gold may be awarded to the highest scoring entry, Silver to the second highest, and Bronze to the third highest of the “arranger grown” entries qualifying for these awards. (“AG” must be written on entry tags in order to be eligible for medal certificates.)

- Blue ribbon winners in classes 1 and 2 are eligible for the ARS Royalty Rosette.
- Blue ribbon winners in classes 3 and 4 are eligible for the ARS Artist Rosette.
- Blue ribbon winners in classes 5 and 6 are eligible for the ARS East Asian Rosette.
- Blue ribbon winners in classes 11 and 12 are eligible for the ARS Mini Royalty Rosette.
- Blue ribbon winners in classes 13 and 14 are eligible for the ARS Mini Artist Rosette.
- Blue ribbon winners in classes 15 and 16 are eligible for the ARS Mini East Asian Rosette.

All first place winners in the Arrangement Division will receive a GARS keeper award. Trophies and awards may be claimed after 2:00 p.m. on Saturday, May 10. ARS certificates, rosettes, and ribbons may be claimed at the close of the show, 4:00 pm., Sunday, May 11.

Characteristics of Designs

Traditional Line – Line is dominant and must show movement in one direction. There is height and width, but little depth, except in focal area. The use of plant materials is restrained.

Traditional Line-Mass – Line is plainly visible. Must have depth as well as height and width with more roses and foliage than a traditional line but is still light and airy. Shows gradation of color and size.

Traditional Mass – arrangement is characterized by large amounts of plant material in a full but not crowded design. Colors and forms are grouped for visual balance and rhythm. There is a well-developed focal area and gradation of color and size.

Modern Abstract Designs – purely compositions of space, texture, color and form and are not constructed around a central focal area. They may have several emergence points for plant material. Plant materials can be altered, manipulated, and/or distorted and placed in a non-conventional manner. Abstraction is dominant and these designs must have two or more abstract qualities. The rose bloom(s) should never be abstracted by distorting.

Modern Free Form Designs – irregular designs with a curving outline. They are inspired by nature and are non-geometric. Plant materials are used in a naturalistic way. These natural forms determine the pattern of the design. They may have more than one center of interest and more than one point of emergence.

Modern Synergistic Designs – composed of three or more separate units creating a unified whole. Unity is evident in repetition of colors and

and forms.

Modern Transparency Designs – designs in which depth is emphasized by some components seen through others. A lattice or netting or natural or manufactured material may be used.

Modern Underwater Designs – must have a focal area of the design placed under water in a clear or transparent container. At a minimum approximately one-third of the design should be underwater. The full design may be placed under the level of the water level. The level of the water in the container may be specified or left up to the arranger.

East Asian – Low Container – This style creates the impression that one is looking into a garden of natural growth, beautiful volume, and is a three-dimensional design. Plant materials are arranged in a **low** container or in a compote **with water showing**. A needlepoint (kenzan) is placed off-center and need not be covered with anything other than water. The design is based on an asymmetrical, three-dimensional triangle. There are three main lines: the tallest establishes the dimension of height [approximately $1\frac{1}{2}$ times the diameter of the container plus its depth], the next tallest gives width [$\frac{2}{3}$ the first stem], and the shortest gives depth [$\frac{1}{3}$ the first stem]. Fillers or assistant stems (ashirai) should be shorter than the stem they are supporting. There is simplicity in construction and restraint in the use of plant material. One-half to two-thirds of the bottom of the container is free of plant material. Water is showing and is an integral part of the design. Foliage does not touch the water surface or rest on the lip of the container.

East Asian – Tall Container – This style stresses space and the natural growth of plant materials. This asymmetrical three-dimensional design uses

a **tall** container or compote. Lines may cross but water does not show. Only in the tall container style are materials permitted to rest on the rim of the container. The first main stem in a tall container style design should be one and one-half times the height of the container – other stem measurements are the same as in the shallow container style. Lines must be clean and definite. Supporting stems are used sparingly to avoid clutter.

East Asian - Free Style – utilizes the forms of nature to create patterns freely to express the arranger's sense of design, unrestricted by the laws of natural growth or the rules of Ikebana. In naturalistic designs only natural plant materials are used as they grow in nature. In non-naturalistic designs, the plant materials may be altered, manipulated and/or distorted and placed in a non-conventional manner. Both plant and man-made materials (such as plastic, wire, paper) may be used in the non-naturalistic design where abstraction is dominant and qualities of space, texture, color, and form are emphasized.

The Magic of Roses

Standard Rose Arrangements

Class 1 – “Mysterious Marvels”

A Mass arrangement staged on a round pedestal 28” H. Eligible for ARS Royalty Award. Eligible for ARS Medal Certificates if “AG” is on tag.

Class 2 – “The Magic Wand”

A Line or Line-Mass arrangement. Eligible for ARS Royalty Award. Eligible for ARS Medal Certificates if “AG” is on tag.

Class 3 – “The Power Of Three”

A Modern Synergistic arrangement composed of three or more separate units creating a unified whole. Unity is evident in repetition of colors and forms. Eligible for ARS Medal Certificates if “AG” is on entry tag.

Class 4 – “Abracadabra”

A Modern Transparency arrangement. Eligible for ARS Artist Award. Eligible for ARS Medal Certificates if “AG” is on entry tag.

Blue ribbon winners of classes 5 and 6 are eligible for the ARS East Asian Award.

Class 5 – “Wise Witches & Witchcraft”

An East Asian arrangement in a low container or compote, showing water. Eligible for East Asian Award. Eligible for ARS Medal Certificates if “AG” is on entry tag.

Class 6 – “The Crystal Ball”

An East Asian arrangement, any other style. May be Shoka, Nageire, Free Style, etc. Type of design must be written on entry tag. Eligible for ARS East Asian Award. Eligible for ARS Medal Certificates if “AG” is on entry tag.

Blue ribbon winners of classes 7 through 10 are eligible for ARS Medal Certificates if “AG” is on entry tag.

Class 7 – “Smoke & Mirrors”

Eligible for ARS Princess of Arrangements Award: An arrangement using fresh roses with any part of the rose bush, including but not limited to hips, canes (with or without foliage) and roots. No other plant materials are permitted. No accessories are permitted. Style of design (Traditional, Modern, East Asian) must be written on tag. Eligible for ARS Medal Certificates if “AG” is on entry tag.

Class 8 – “The Magic Hat ”

Eligible for ARS Duke Award: An arrangement using fresh roses of any classification type with or without fresh and/or dry plant material. Design must be larger than 10” but no larger than 20” in height, width, or depth. Style of design (Traditional, Modern, East Asian) must be written on tag. No accessories are permitted. Eligible for ARS Medal Certificates if “AG” is on entry tag.

Class 9 – “Card Tricks”

Eligible for ARS Best Novice Certificate: Restricted to arrangers who have never won a blue ribbon for an arrangement in an ARS rose show. A Standard arrangement of arranger’s choice. Accessories and fresh and dried materials permitted. Style of design (Traditional, Modern, East Asian) must be written on tag. Eligible for ARS Medal Certificates if “AG” is on entry tag.

Class 10 – “Magician Gloves”

Eligible for ARS Court of Etiquette Certificate: It’s time for a tea party! A semiformal tray for serving tea, including an arrangement featuring fresh roses, a dish for food, a vessel for drinking, and other decorative components (napkin, placemat, etc.)

as desired. No flatware is permitted. Eligible for ARS Medal Certificates if “AG” is on entry tag.

Miniature Rose Arrangements

Arrangements in the following classes must use only fresh Miniature or Miniflora roses. Miniature arrangements must not exceed 10” in any direction, including container, base and accessories, if used. Miniature and Miniflora arrangements will be judged at eye level.

Blue ribbon winners of classes 11 and 12 are eligible for the ARS Miniature Royalty Award.

Class 11 – “The Magician’s Cape”

A Miniature Mass arrangement. Eligible for ARS Miniature Royalty Award. Eligible for ARS Miniature Medal Certificates is if “AG” is on entry tag.

Class 12 – “The Silver Rings”

A Miniature Line or Line-Mass arrangement. Eligible for ARS Miniature Royalty Award. Eligible for ARS Miniature Medal Certificates is if “AG” is on entry tag.

Blue ribbon winners of classes 13 and 14 are eligible for the ARS Miniature Artist Award.

Class 13 – “A Puff Of Smoke”

A Miniature Modern Abstract arrangement. Eligible for ARS Artist Award. Eligible for ARS Medal Certificates if “AG” is on entry tag.

Class 14 – “The Underwater Escape”

A Miniature Modern Underwater arrangement. Eligible for Miniature Artist Award. Eligible for ARS Miniature Medal Certificates if “AG” is on entry tag.

Blue ribbon winners of classes 15 and 16 are eligible for

the ARS Miniature East Asian Award.

Class 15 – “The Fortune Teller”

A Miniature East Asian arrangement in a tall container. Eligible for ARS Miniature East Asian Award. Eligible for ARS Miniature Medal Certificates if “AG” is on entry tag.

Class 16 – “The Coin Trick”

A Miniature East Asian arrangement, any other style. May be Shoka, Moribana, Free Style, etc. Type of design must be written on entry tag. Eligible for Miniature East Asian Award. Eligible for ARS Miniature Medal Certificates if “AG” is on entry tag.

Class 17 – “Rabbit In A Hat”

Eligible for ARS Miniature Duchess of Arrangements Award: An arrangement using fresh Miniature or Miniflora roses with dried and/or dried, treated material. No fresh plant material other than roses and rose foliage may be used. No accessories are permitted. Style of design (Traditional, Modern, East Asian) must be written on tag. Eligible for ARS Medal Certificates if “AG” is on entry tag.

Dried Exhibits

Entries may not have been exhibited in any other show.

Class 18 – “Sensational Illusions”

Eligible for ARS Rosecraft Certificate: A decorated shoe. Dried roses must be the dominant flower interest and must be named on the entry tag. Other dried and/or treated plant materials may be used. NO fresh plant material permitted. Staging may be provided by the exhibitor. Table space 18” W x 18” D.

Judges' Classes

Class 19 – “The Gypsy”

Eligible for ARS Best Judge's Certificate: A Standard or Miniature arrangement of arranger's choice. Accessories and fresh and dried materials permitted. Style of design (Traditional, Modern, East Asian) must be written on tag. Entries are restricted to ARS Arrangement judges judging arrangements in this show.

Arranging for Fun

Class 20 – “Nothing Up My Sleeve”

A fun bouquet with no design rules or type. No artificial materials allowed. Roses may be named on the entry tag. Only one (1) entry per exhibitor.

DIVISION 3

PHOTOGRAPHY

Rules for Photography Exhibitors

1. All entries must be submitted between 6:00 a.m. and 9:30 a.m. on Saturday, May 10, 2025. Entries may not be removed before 5:00 p.m. on Sunday, May 11. Each exhibitor is responsible for prompt removal of his/her design(s) at the close of the show.
2. Competition is open to all rose photographers.
3. All photographs must include roses. Roses must have been outdoor grown (not florist roses) and of good quality. The exhibitor need not have grown the roses.
4. The photograph must be the work of the individual exhibitor. Printing, mounting, and matting may be done professionally.
5. The same photograph may not be entered in more than one class. Only one photo of a cultivar may be entered in the same class.
6. Photos which have previously won a blue ribbon or higher award in another local, district, or national rose show may not be entered in this show.
7. Cropping and digital corrections of an image are permitted in all classes. Extensive digital manipulation (including removal of backgrounds) is allowed only in Class 5, and will result in severe penalization if present in other classes.
8. Each entry must be accompanied by a standard ARS red/white arrangements entry tag showing class, variety name, and exhibitor's name on the tag. If the exhibit has been grown by the photographer, then the designation "EG" should be written in the top right corner of the entry tag. The roses in a garden photograph or in creative interpretation do NOT need to be identified. While the same photo cannot be entered by more than one person, entries from the same garden may be exhibited by multiple members of the immediate family as Exhibitor Grown.
9. Roses are to be exhibited by the recognized AEN. To verify a rose name, consult Modern Roses XII, the 2024 edition of the Handbook for Selecting Roses, and Modern Roses on-line. In cases where a variety is not listed in any of the above official ARS publications, the 2023 edition of the Combined Rose List (CRL) or HelpMeFind.com may be used as a reference. In the event there is a conflict regarding name, class, color, or other pertinent information between the CRL or HelpMeFind.com and the official ARS publications, the most recent ARS publication will prevail.
10. Entries will be disqualified for the following reasons:
 - a. Misnamed
 - b. Unlabeled
 - c. Mislabeled
 - d. Exhibitor name visible
 - e. An entry in violation of ARS rules
11. All rights to the submitted photographs are retained by the owners of the photographs. However, by submitting a photograph to the contest, the exhibitor (1) warrants that he or she owns the copyright of the submitted photograph and is not legally prohibited from submitting it to the contest, and (2) agrees to allow the Greater Atlanta Rose Society to display the photo at the May 2025 show and publish the photograph in The Phoenix.
12. Photograph must be 8"x10", mounted or window-matted (with photo affixed to back of mat) on 11"x14" black mats. Mat is to be provided by exhibitor, and shall include a light-blocking backing behind the photo. No frames, glass, plastic, or frame clips are allowed. Each entry must be labeled on the back with the exhibitor's name, and the top of the photograph

Rules for Photography Exhibitors

must be indicated. The exhibitor's name may not appear on the front of the exhibit.

13. Exhibitors are limited to three (3) entries per photography class, a maximum of eighteen (18) entries. Entries may not have won blue-ribbon or higher awards (rosettes, or certificates) in a previous local rose society, Deep South District, or ARS national rose photography contest.

Awards

One blue, red, yellow, and white ribbon may be awarded in each class.

Keeper prizes will be awarded to the blue-ribbon entry in each class.

Rosettes will be awarded to the Queen, King, and Princess of Show, which will be selected from the blue-ribbon winners in each class.

If the exhibitor grew the rose her/himself AND marks "AG" in the upper right corner, a blue-ribbon entry will be eligible for ARS Gold, Silver, or Bronze certificates.

SCORE CARD

Conformance to class rules	5
Requirements of specific section	50
Composition Includes balance, dominance, contrast, rhythm, proportion, scale	15
Technique Includes exposure, color, and presentation	15
Distinction Superiority in every respect	15
	<hr/>
	100

Photography Classes

Class 1 – An Individual Rose Bloom

The rose may be at exhibition stage or fully open, but definitely more than bud stage. The bloom and foliage should be of good quality, clean, free of disease. The background should be free of distractions.

Class 2 – A Rose Spray

Rose blooms within the spray may be at exhibition stage or fully open; at least two blooms must be open to more than bud stage. The blooms and foliage should be of good quality, clean, and free of disease. The background should be free of distractions.

Class 3 – A Garden Scene

Roses take center stage in a garden scene.

Class 4 – A Close-Up (Macro) Image

Photo shall include some detail of a rose bloom or rose plant.

Class 5 – A Digitally Manipulated Image

An image that creatively expresses the photographer's love and enjoyment of roses.

Class 6 – A Rose Arrangement

The arrangement in the photo may include any class of rose. The name of roses and of the arranger should be included on the entry tag if known.

Class 7 – A Rose Selfie

Have fun in the garden and take a selfie that includes you and the rose!

Class 8 – Novice

A rose photo taken by someone who has never previously won a photography blue ribbon in a

local rose society, Deep South District or American Rose Society rose show. Eligible for ARS Best Novice certificate.

Class 9 – Youth

A rose photo taken by someone who is 17 years of age or younger.

Class 10 – Judges

A rose photo taken by anyone judging horticulture, arrangements, or photography in this show. Eligible for ARS Best Judges certificate.

All-American Rose Selections

Candelabra – 1999	Christian Dior – 1962	Gene Boerner – 1969
Easy Does It – 2010	Chrysler Imperial – 1953	Glowing Peace – 2001
Elle – 2005	Cinco de Mayo – 2009	Gold Cup – 1958
Eureka – 2003	Circus – 1956	Golden Showers – 1957
About Face – 2005	Class Act – 1989	Golden Slippers – 1962
All That Jazz – 1992	Color Magic – 1978	Granada – 1964
Amber Queen – 1988	Comanche – 1969	Grande Duchesse Charlotte – 1943
America – 1976	Command Performance – 1971	Gypsy – 1973
American Heritage – 1966	Crimson Bouquet – 2000	Heart's Desire – 1942
Angel Face – 1969	Day Breaker – 2004	Helen Traubel – 1952
Apollo – 1972	Day Dream – 2005	High Noon – 1948
Apricot Nectar – 1966	Debut – 1989	Honey Perfume – 2004
Apricot Queen – 1941	Diamond Jubilee – 1948	Honor – 1980
Aquarius – 1971	Dick Clark – 2011	Horace McFarland – 1945
Arizona – 1975	Dickson's Red – 1940	Hot Cocoa – 2003
Artistry – 1997	Double Delight – 1977	Impatient – 1984
Bahia – 1974	Dream Come True – 2008	Intrigue – 1984
Betty Boop – 1999	Duet – 1961	Ivory Fashion – 1959
Bewitched – 1967	Electron – 1973	Jiminy Cricket – 1955
Bing Crosby – 1981	Europeana – 1968	John S. Armstrong – 1962
Bon-Bon – 1974	Fame! – 1998	Julia Child – 2006
Bonica – 1987	Fashion – 1950	Kaleidoscope – 1999
Brandy – 1982	Fire King – 1960	Katherine T. Marshall – 1944
Brass Band – 1995	First Edition – 1977	King's Ransom – 1962
Brigadoon – 1992	First Light – 1998	Knock Out – 2000
Broadway – 1986	First Prize – 1970	Lady Elsie May – 2005
California – 1941	Flash – 1940	Lilibet – 1954
Charlotte Armstrong – 1941	Floradora – 1945	Livin' Easy – 1996
Camelot – 1965	Forty-niner – 1949	Love – 1980
Capistrano – 1950	Fourth of July – 1999	Love & Peace – 2002
Carefree Delight – 1996	Francis Meilland – 2013	Lowell Thomas – 1944
Carefree Spirit – 2009	Fred Edmunds – 1944	Lucky Lady – 1967
Carefree Wonder – 1991	Fred Howard – 1952	Ma Perkins – 1953
Caribbean – 1994	French Lace – 1982	Mme. Chiang Kai-shek – 1944
Cathedral – 1976	Friendship – 1979	Mme. Marie Curie – 1944
Charisma – 1978	Fusilier – 1958	Mardi Gras – 2008
Cherish – 1980	Garden Party – 1960	Marina – 1981
Cherry Parfait – 2003	Gay Princess – 1967	Marmalade Skies – 2001
Child's Play – 1993	Gemini – 2000	

Marshall – 1944
 Mary Margaret McBride – 1943
 Matterhorn – 1966
 Mirandy – 1945
 Medallion – 1973
 Memorial Day – 2004
 Midas Touch – 1994
 Mikado -1988
 Miss All-American Beauty – 1968
 Mission Bells – 1950
 Mister Lincoln – 1965
 Mojave – 1954
 Mon Cheri – 1982
 Moondance – 2007
 Mt. Hood – 1996
 New Beginning – 1989
 New Year – 1987
 Nocturne -1948
 Olympiad – 1984
 Opening Night – 1998
 Oregold – 1975
 Paradise – 1979
 Pascali – 1969
 Peace – 1946
 Perfect Moment – 1991
 Perfume Delight – 1974
 Pink Parfait – 1961
 Pink Promise – 2009
 Pinkie – 1948
 Pleasure – 1990
 Portrait – 1972
 Pride 'n' Joy – 1992
 Prima Donna – 1988
 Prominent – 1977
 Queen Elizabeth – 1955
 Rainbow Knock Out – 2007
 Rainbow Sorbet – 2006
 Redgold – 1971
 Rio Samba – 1994
 Roman Holiday – 1967
 Rose Parade – 1975
 Royal Highness – 1963

Rubaiyat – 1947
 St. Patrick – 1996
 San Fernando – 1948
 Sarabande – 1960
 Saratoga – 1964
 Scarlet Knight – 1968
 Scentimental – 1997
 Seashell – 1976
 Secret – 1995
 Sheer Bliss – 1987
 Sheer Elegance – 1991
 Shining Hour – 1991
 Showbiz – 1985
 Shreveport – 1982
 Singin' in the Rain – 1995
 Solitude – 1993
 Starfire – 1959
 Starry Night – 2002
 Strike It Rich – 2007
 Sun Flare – 1983
 Sun Sprinkles – 2001
 Sundowner – 1979
 Sunset Celebration – 1998
 Sunshine Daydream – 2012
 Sutter's Gold – 1950
 Sweet Inspiration – 1993
 Sweet Surrender – 1983
 Taffeta – 1948
 Tahitian Sunset – 2006
 Tallyho – 1949
 The Chief – 1940
 Tiffany – 1955
 Timeless – 1997
 Touch of Class – 1986
 Tournament of Roses – 1989
 Tropicana – 1963
 Vogue – 1952
 Voodoo – 1986
 Walking on Sunshine – 2011
 Whisper – 2003
 White Bouquet – 1957
 White Knight – 1958

White Lightnin' – 1981
 Wild Blue Yonder – 2006
 World's Fair – 1940
 Yankee Doodle – 1976

American Garden Rose Selections

Belinda's Blush – 2020
 Brick House – 2021
 Brindabella Purple Prince – 2021
 Brick House Pink – 2023
 Brindabella Pink Princess – 2023
 Coral Knock Out – 2018
 Canyon Road – 2020
 Celestial Night – 2022
 Charlene de Monaco – 2020
 Cole's Settlement – 2020
 Dee-Lish – 2016
 Easy on the Eyes – 2022
 Easy to Please – 2021
 Faith Whittlesey – 2017
 Icecap – 2017
 Lady of Shalott – 2017
 Lemon Fizz – 2020
 Magnolia Memories – 2023
 Munstead Wood – 2017
 Naga Belle – 2020
 OSO Easy Urban Legend – 2023
 Peachy Knock Out – 2017
 Petite Knock Out – 2023
 Pink Freedom – 2022
 Pretty Polly Pink – 2022
 Promises – 2018
 Sweet Spirit – 2021
 Tahitian Treasure – 2017
 Tequila Gold – 2019
 Tequila Supreme – 2019

Thomas Affleck – 2016
 Top Gun – 2021
 Tropica – 2021
 Wedding Bells – 2020

ARS Members' Choice

Bees Knees – 2006
 Cinco de Mayo – 2011
 Cooper – 2016
 Dick Clark – 2015
 Easy Does It – 2013
 Gemini – 2005
 Home Run – 2010
 Hot Cocoa – 2007
 Joy – 2012
 Julia Child – 2009
 Knock Out – 2004
 Randy Scott – 2014
 Oh My! – 2017
 Daddy Frank – 2018
 Neil Diamond – 2018F
 South Africa – 2019
 Olivia Rose Austin – 2020+F
 Ring of Fire – 2021
 Violet's Pride – 2021F
 Peggy Martin – 2022
 Sweet Mademoiselle – 2022F

Award of Excellence for Miniature Roses

Ambiance – 2009
 Andie MacDowell – 2004
 Angelica Renae – 1996
 Ann Hooper – 2012
 Applause – 2000

Autumn Splendor – 1999
 Avandel – 1978
 Baby Bloomer – 2006
 Baby Boomer – 2003
 Baby Dainty Bess – 2023
 Baby Eclipse – 1984
 Be My Baby – 2011
 Beauty Secret – 1975
 Best Friends – 2002
 Billie Teas – 1993
 Black Jade – 1985
 Bonfire – 2007
 Boomerang – 1993
 Butter Me Up – 2012
 Cal Poly – 1992
 Caliente – 2006
 Center Gold – 1982
 Centerpiece – 1985
 Chattooga – 2005
 Chessie's Favorite – 2016
 Child's Play – 1993
 Cornsilk – 1983
 Cuddles – 1979
 Cupcake – 1983
 Daddy Frank – 2010
 Debidue – 1992
 Dee Bennett – 1989
 Deja Blu – 2009
 Diamond Eyes – 2013
 Doris Morgan – 2003
 Edisto – 2008
 Figurine – 1992
 First and Foremost – 2010
 Gloriglo – 1978
 Golden Halo – 1991
 Good Morning America – 1991
 Harm Saville – 2005
 Heavenly Days – 1988
 Holy Toledo – 1980
 Hombre – 1983
 Hot Shot – 1984
 Hot Tamale – 1994

Hula Girl – 1976
 Humdinger – 1978
 Iced Raspberry – 2006
 Jean Kenneally – 1986
 Jeanne Lajoie – 1977
 Jennifer – 1985
 Jim Dandy – 1989
 Jingle Bells – 1995
 Joy – 2008
 Judy Fischer – 1975
 Julie Ann – 1984
 Just for You – 1991
 Kristen – 1993
 Lavender Lace – 1975
 Leading Lady – 2007
 Lemon Gems – 2000
 Life Lines – 2005
 Life's Little Pleasures – 2023
 Little Flame – 1999
 Little Jackie – 1984
 Little Tommy Tucker – 1999
 Loving Touch – 1985
 Magic Carrousel – 1975
 Magic Show – 2010
 Mary Pickersgill – 2011
 Mary Marshall – 1975
 Merlot – 2002
 Michel Cholet – 2001
 Midnight Fire – 2023
 Nighthawk – 1989
 Old Glory – 1988
 OSO Happy Petit Pink – 2012
 OSO Easy Lemon Zest – 2016
 Over the Rainbow – 1975
 Pacesetter – 1981
 Palmetto Sunrise – 1993
 Party Girl – 1981
 Peaches 'n' Cream – 1977
 Peachy White – 1976
 Picotee – 2004
 Pink Flamenco – 2011
 Pink Petticoat – 1980

ARS Miniature/Mini- flora Hall of Fame

Playgold – 1998
 Power Point – 2008
 Puppy Love – 1979
 Rainbow's End – 1986
 Ralph Moore – 2000
 Red Cascade – 1976
 Red Flush – 1979
 Regine – 1990
 Ring of Fire – 1987
 Ringo – 2023
 Rise 'n' Shine – 1978
 Ruby - 2001
 Saluda – 2007
 Salute – 2004
 Sequoia Gold – 1987
 Sheri Anne – 1975
 Show Stopper – 2008
 Sincerely Yours – 1992
 Snow Bride – 1983
 Spirit Dance – 2010
 Starglo – 1975
 Sun Sprinkles – 2001
 Suzy – 1991
 Sweet Caroline – 1999
 Sweet Diana – 2003
 Tammy Clemons – 2014
 This Is the Day – 2003
 Tipper – 1989
 Toy Clown – 1975
 Tropical Twist – 1997
 Valerie Jeanne – 1983
 Warm and Fuzzy – 2009
 Whimsy – 2013
 White Angel – 1975
 Winsome – 1985
 You're the One – 2013
 Zinger – 1979

Starina – 1999
 Beauty Secret – 1999
 Magic Carrousel – 1999
 Rise 'n' Shine – 1999
 Party Girl – 1999
 Cinderella – 2000
 Mary Marshall – 2000
 Green Ice – 2001
 Jeanne Lajoie – 2001
 Cupcake – 2002
 Snow Bride – 2003
 Little Jackie – 2003
 Minnie Pearl – 2004
 Red Cascade – 2004
 Jean Kenneally – 2005
 Rainbow's End – 2005
 Giggles – 2006
 Black Jade – 2006
 Pierrine – 2007
 Irresistible – 2008
 Fairhope – 2008
 Gourmet Popcorn – 2009
 Luis Desamero – 2009
 Tiffany Lynn – 2009
 Chelsea Belle – 2010
 Grace Seward – 2010
 Fancy Pants – 2010
 Kristin – 2011
 Olympic Gold – 2011
 Hot Tamale – 2012
 X-Rated – 2012
 My Sunshine – 2013
 Peggy "T" – 2013

Winsome – 2013
 Soroptimist International – 2014
 Incognito – 2014
 Glowing Amber – 2015
 Miss Flippins – 2016
 Bees Knees – 2017
 Autumn Splendor – 2018
 Cachet - 2018
 Arcanum – 2019
 Popcorn – 2019
 Dancing Flame – 2020
 Linville – 2020
 Scentsational – 2020
 Old Glory – 2020
 Solar Flair – 2020
 Dr. John Dickman – 2021
 Breath of Spring – 2021
 Conundrum – 2021
 Foolish Pleasure – 2022
 Butter Cream – 2022
 Memphis King – 2022